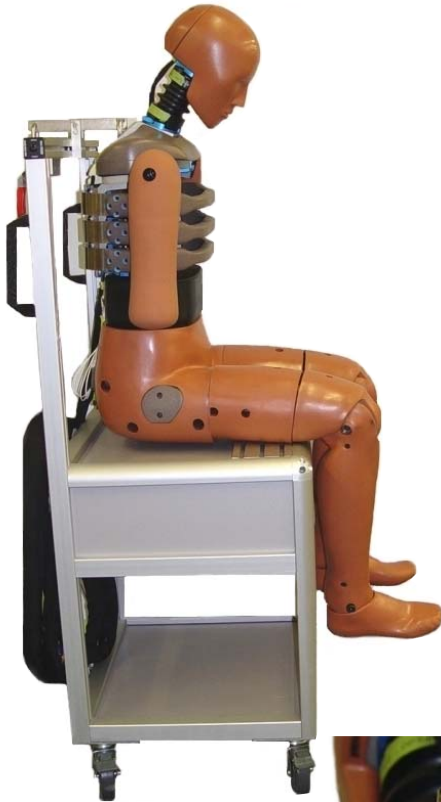




Storage/Transport Chair for the EuroSID-I, ES-2 and ES-2re

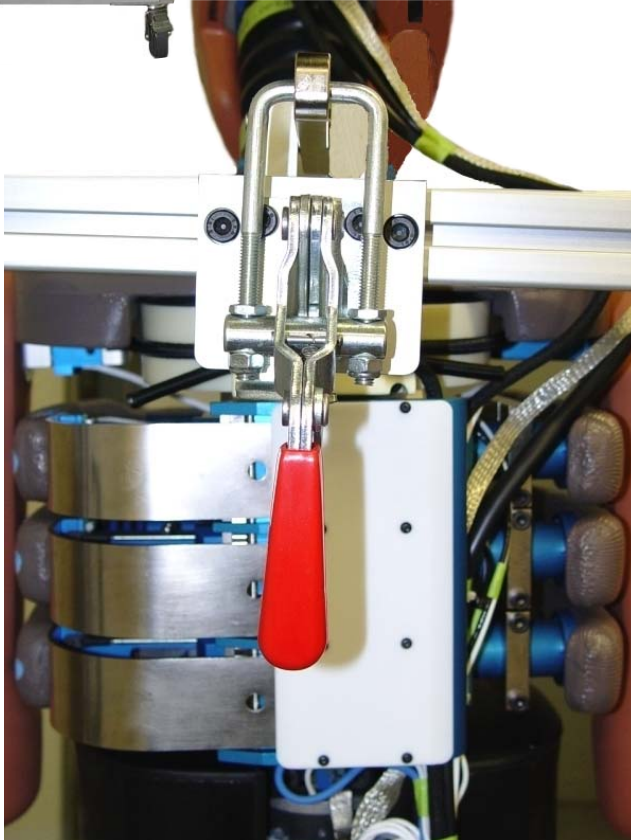
Model 490 - 6926



Denton ATD, Inc. offers a dummy chair that is ideal for crash test dummy storage and transportation within the laboratory or testing facility. The Model 490-6926 is designed for use with the EuroSID-I and the ES-2 and ES-2re dummies.

Dummy Chair Features:

- Light weight
- Solid framework
- Recessed seat panel
- Upper shelf enclosed on three sides for storage of dummy documentation, tools, etc.
- Storage Spool for dummy cabling
- Heavy duty swivel casters with brakes
- Posts adjustable for height and width
- Handles adjustable for height
- Open lower storage shelf



Denton ATD, Inc. 10317 U.S. Highway 250 North, Milan, Ohio 44846-9570
Tel (419) 625-5200 * Fax (419) 625-5335 * email: info@dentonatd.com * www.dentonatd.com

Creating the New Standard in ATDs

Revision: 04/23/07