

# BioRID-2 Training

## About BioRID-2

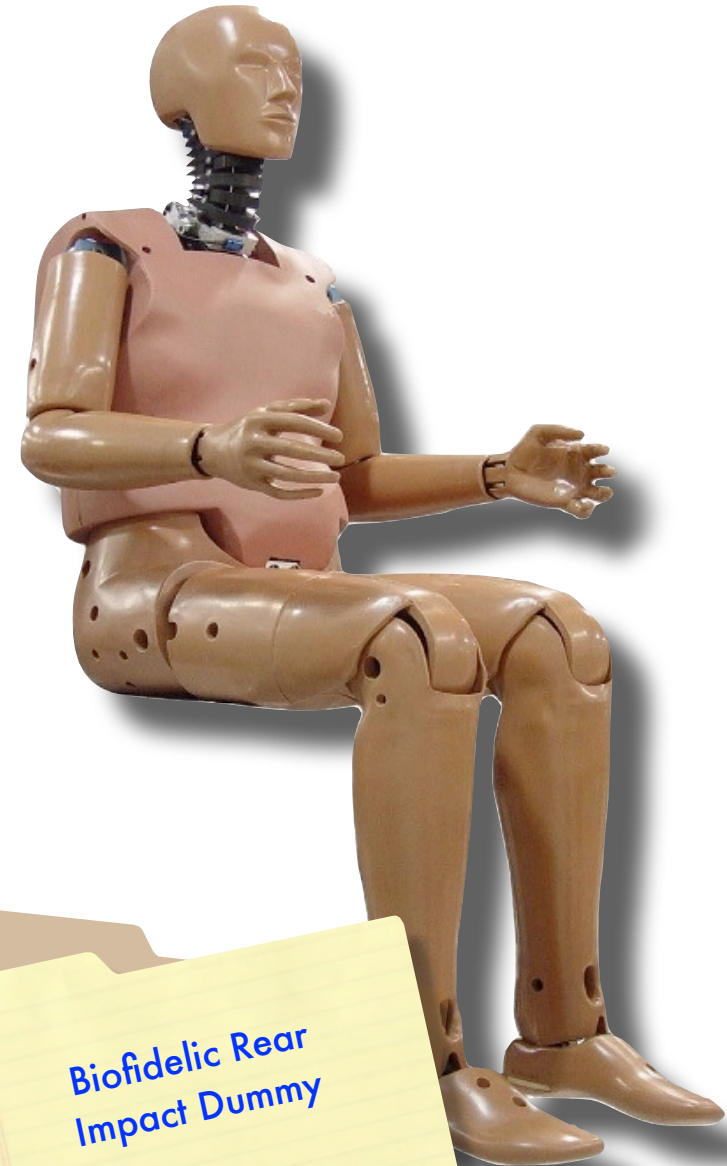
The Biofidelic Rear Impact Dummy (BioRID) was originally designed in Europe for automotive rear impact testing.

There is little obvious difference between the first BioRID and the second version. Mainly the bumpers and damper mechanism have changed to improve the performance of the dummy.

The head, pelvis, legs, & arms are taken from the Hybrid III 50th% with modifications to permit the installation of the specialized load cells and adapt the upper torso to the pelvis assembly.

However, the neck and upper torso are radically different from anything currently available. The individual articulations of the spinal column make improved spinal motion more human-like and thus provide a significantly improved capability of accurately measuring injury.

Most recently the damper mechanism has undergone several changes to improve its function and durability. This improved damper assembly has substantially improved the BioRID-2's certification performance and repeatability.



Biofidelic Rear  
Impact Dummy

## Location

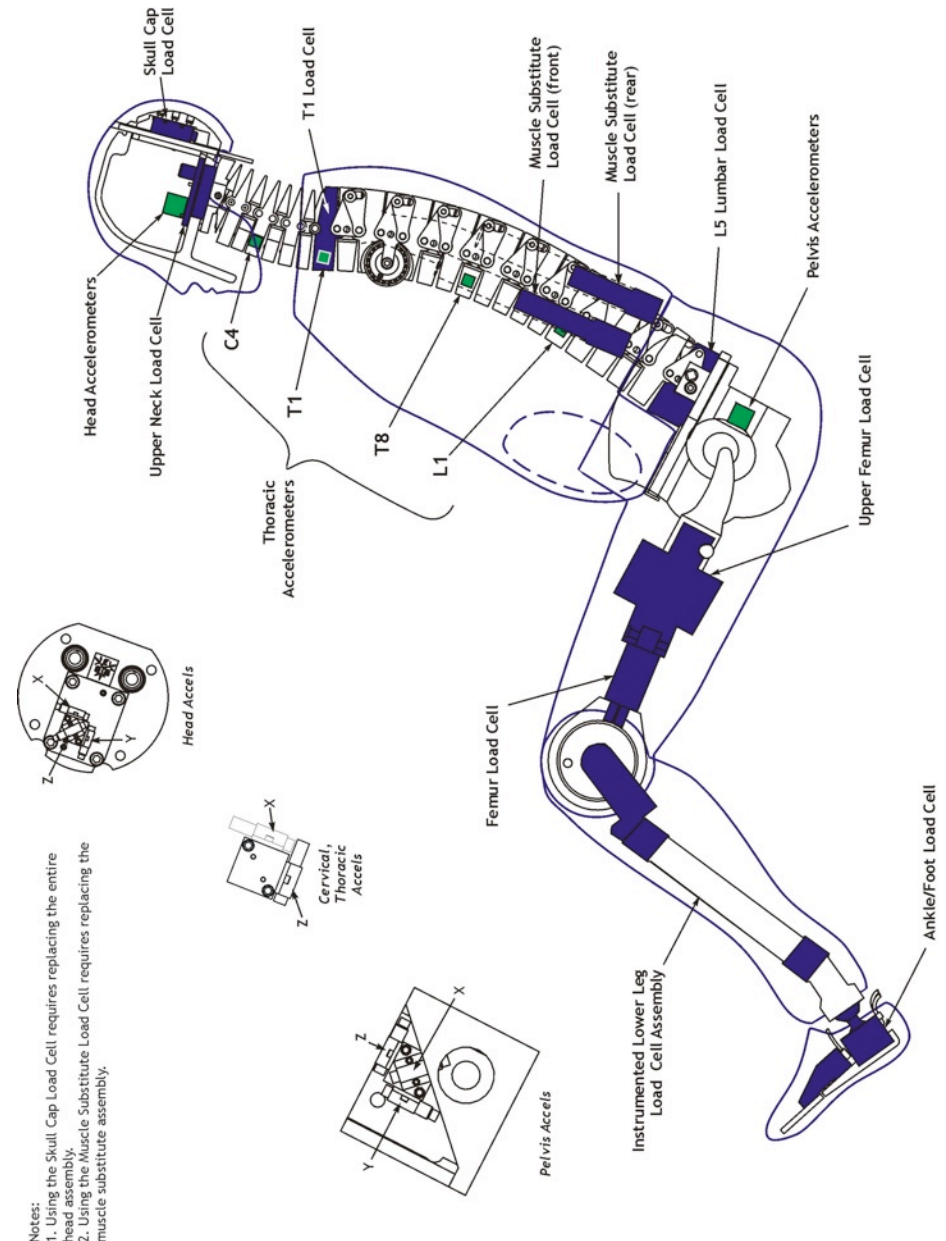
**Denton Technical Center**  
1965 Larchwood Drive  
Troy, Michigan 48083 USA  
Tel: 248.852.5100  
[www.DentonTech.Net](http://www.DentonTech.Net)

# Training Agenda

The two-day training seminar for the BioRID-2 dummy consists of:

Day 1	Introduction to BioRID
	BioRID Instrumentation
	Disassembly / Assembly
Day 2	BioRID Certification
	BioRID Certification Troubleshooting
	Review, Questions & Answers

Introduction to BioRID	History, basic components, uses.
BioRID Instrumentation	Discussion and demonstration of sensors and devices that can be installed in the ATD.
Disassembly / Assembly	Demonstration and practical exercises in the proper disassembly and assembly of the ATD.
BioRID Certification	Demonstration and practical exercises in the proper adjustment and certification of the ATD.
BioRID Certification Troubleshooting	Demonstration and practical exercises concerning how to overcoming certification problems.



Notes:  
 1. Using the Skull Cap Load Cell requires replacing the entire head assembly.  
 2. Using the Muscle Substitute Load Cell requires replacing the muscle substitute assembly.